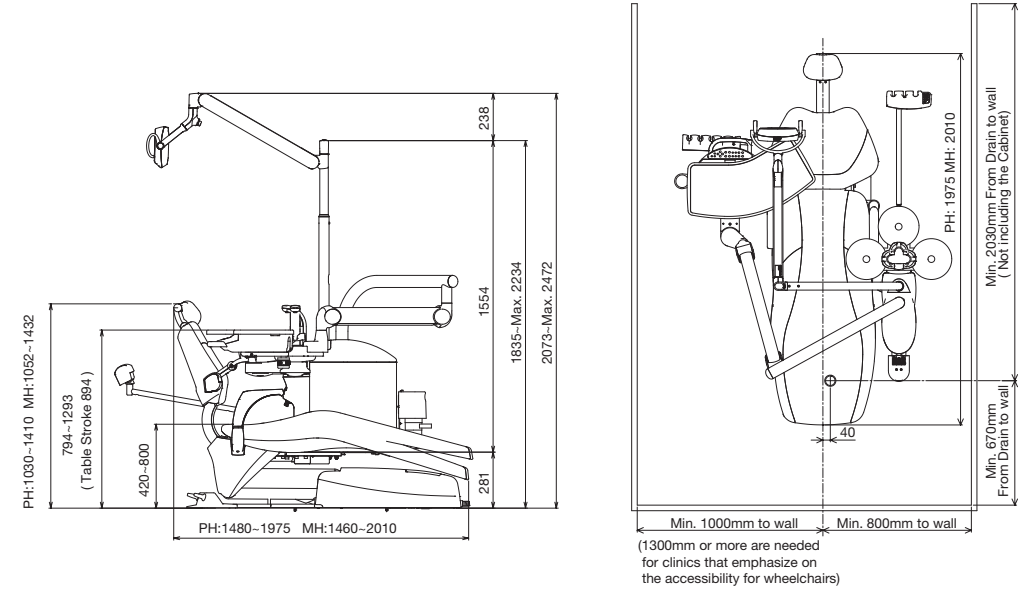


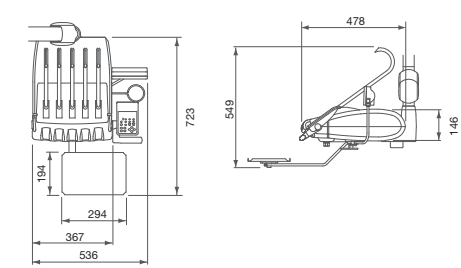
Dimensions

size (mm)

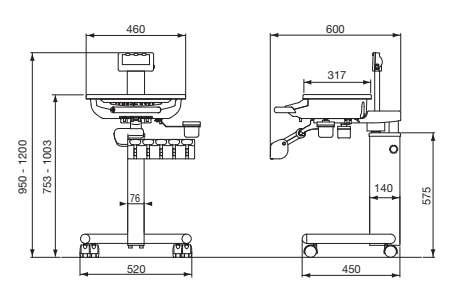
■ Chair Mount -EURUS TYPE-



■ Rod Type



■ Cart Type



CLESTA II



Smooth and Contoured - provides the highest comfort for the patient

■ Chair Mount -EURUS TYPE-



Chair Mount -EURUS TYPE-

Over the Patient

The over the patient type unit offers a versatile, balanced and precise working comfort between the 9 and 1'o clock position. The enhanced comfort of the EURUS chair is an ideal complement to this.

Chair Mount -EURUS TYPE-

Cart



Shown as
-Unit : CLESTA II
-Chair : CLESTA II Chair (EURUS TYPE)
-Light : 900 LED Light



The unique seating position with low entry along with a 200 kg lifting capability makes the Clesta II Chair EURUS Type one of the most versatile chairs on the market.



Twin-axis headrest

The positioning of the headrest can be set precisely in 7,5 degree increments to accommodate a wide range of patients. The height adjustment for taller patients can be easily adjusted with very little effort from the doctor.



Rotating armrest

The armrests are designed with a length and shape that makes it easy to hold on to. The side-rotating mechanism helps elderly patients to get in and out of the chair with ease.



Integrated cuspidor

The integrated cuspidor creates an attractive hygienic environment for the patient, and the smooth surface makes it easy to clean. The detachable glass bowl is durable and easy to clean.



Doctor table

Incorporating the holder type instrumentation, the doctor table is adjustable both vertically and horizontally to offer optimal positioning.



Chair control

The dental chair can be operated entirely in a hands-free, hygienic and intuitive manner by foot.



900 LED Light

The 900 LED light provides sensor activation, stepless intensity between 4.000 and 35.000 Lux, fluid three axis rotation and a clear light pattern with high color rendering.



Assistant element

The assistant element includes a syringe, a small and big vacuum hose, and easy to clean membrane switches for controlling the chair, the cuspidor bowl flush and the cup filler.



Foot control

The foot controller is compact and highly functional. The instrument water spray and chip air can be activated hands-free.

Intuitive Control - technology you can rely on

Control Panel



- | | | | |
|---------------------------|--------------------------------|-------------------------|-----------------|
| 1 Power Indicator | 5 Micromotor speed setting | 9 Decrease function | 13 Cup filler |
| 2 Safety Lock Indicator | 6 Micromotor direction setting | 10 Increase function | 14 Bowl flush |
| 3 On/Off spray water | 7 Function Switch | 11 Chair programmes | 15 Dental light |
| 4 On/Off instrument light | 8 Function button | 12 Manual chair control | 16 Display |

F-button for additional functions

- | | | | |
|--|--|---|--|
| TIMER SET
4=START | Timer
Set timer for alarm. | ALARM TYPE=0 F=↓
PUSH 0 1 2 LP(3) | Electronic sound for timer
4 timer sounds to choose from. |
| Dr. NUMBER =0 ↓ | Operator selection
Preset position for chair and preset rotation speed for micromotor can be set for 4 individual dentist. | M.LMT=3 STEP F=↓
(-)=3 (+)=5 STEP | Micromotor maximum speed setting
The maximum rotation speed of the micromotor can be selected in 3 steps or 5 steps. |
| FLUSH OUT F=↓
WITHOUT | Flushing system
The unit is equipped with a short and long term flushing program. | SPRAY=4MODE F=↓
(-)=2 (+)=4 MODE | Spray water mode
When using the micromotor, either a 2-mode or 4-mode of spray water can be selected. |
| Beep=ON F=↓
(-)=OFF (+)=ON | Control panel button sound ON/OFF
Sound can be deactivated. | B*G=LINK F=E
(-)=IND (+)=LINK | Cup filler and bowl flush
Select cup filler and bowl flush to operate together or independently. |
| LP MODE=HOLD F=↓
(-)=FOOT(+) =HOLD | Handpiece light mode
Handpiece light mode can be chosen. | | |

Display Micromotor

- | | | | |
|---------------------------------|--|--------------------------------|--|
| No1 SET1 100
10000rpm | Micromotor mode
The micromotor rotation speed can be selected by sliding the foot controller pedal right or left. Rotation speed is displayed. | No4 SCALING
■■■■■■■■ | Scaler mode
Easy to confirm which mode of scaling has been selected (scaling, endo, perio). Power output is displayed. |
|---------------------------------|--|--------------------------------|--|

Instrument Delivery

■ Holder



■ Place



■ Rod



With optional left side control panel.



Options & Accessories



Flush out-Tray



Panorama size
Film viewer



Dental size
Film viewer



Ratchet gear type assistant
holder arm



Monitor arm and bracket

CLESTA II Options & Accessories

● Standard | ○ Selectable | - Not available

Chair	Chair Mount (EURUS TYPE)
Twin-axis headrest	●
Power headrest	-
Armrest at left side only (fixed)	●
Armrest right side (rotatable)	○
8-way foot switch (manual/auto)	-
Integrated stick switch (2 controls, manual & auto mode chair switch)	●

Doctor Element	Electric type
Control panel (Chair auto/manual, cup filler, bowl flush, handpiece, motor speed and additional functions)	●
Large doctor table	●
Small doctor table	○
Foot controller	●
3F-Syringe	○
6F-Syringe	○
Turbine hose	○
Micromotor	○
Scaler	○
Dental size film viewer	○
Panorama size film viewer	○

Assistant element	
Ratchet gear type assistant arm	○
Syringe	○
Light	
900 LED LIGHT	○

Cuspidor	
Electric time control for cup filler & bowl flush	●
Sensor control for cup filler and bowl flush	○
Rotating cuspidor bowl	●
Coloured glass bowl (blue)	●
Coloured glass bowl (green, pink, transparent)/ white porcelain	○
Heated cup filler	○
Water disinfection system	○
Clean water bottle System	○
Seperator	○
Flush out-Function	●
Monitor arm and bracket	○

Color Variations

■ EURUS TYPE [Standard] + [Soft]



Standard [Sky Blue]

Warm Color



Coral Pink/ES20



Light Pink/ES30



Beige/ES21



Camel/ES14



Bordeaux/ES12



Black/ES8

Cool Color



Mint Blue/ES5



Indigo Blue/ES25



Light Blue/ES16



Purple/ES26



Light Gray/ES33



Gray Teal/ES28

Earth Color



Rose/ES34



Mauve/ES27



Forest/ES31



Aldo Blue/ES23



Ash Gray/ES32



Chocolate/ES11

Vitamin Color



Scarlet Red/ES24



Mandarin Orange/ES22



Lemon Yellow/ES2



Yellow Green/ES18



Sky Blue/ES7



Blue/ES29

■ EURUS TYPE [Luxury]



Luxury
[Maroon]



Black/SH1



Dark Blue/SH9



Maroon/SH7



England Green/SH18



Orange/SH22



Camel/SH10



Mustard Yellow/SH6



Ivory/SH15